



SPEND €375* ON COLTENE PRODUCTS...

**Get a €30
Love2shop
Voucher!**

**Invoice total exc.vat for spend on COLTENE products



RESTORATION HIGHLIGHT KIT



Syringe Kit shown.
Tips Kit also available

The perfect way to try **NEW COLTENE** materials
and **save over 50%** on buying individually!

BRILLIANT
EverGlow



OneCoat 7
Universal
Bond



DIATECH
ShapeGuard



Restoration Highlight Kit - Syringes
ART# 6002 0090

3 x BRILLIANT EverGlow Syringes (3g)
(1 x A1/B1, A2/B2, A3/D3),
1 x One Coat 7 Universal Bond 5ml +50 brushes,
2 DIATECH ShapeGuard brushes for composite
(1 x pre-polisher and 1 high lustre)

Restoration Highlight Kit - Tips
ART# 6002 0091

30 BRILLIANT EverGlow Tips 0.2g, 10 tips of each
(A1/B1, A2/B2, A3/D3),
1 x One Coat 7 Universal Bond 5ml +50 brushes,
2 DIATECH ShapeGuard brushes for composite
(1 x pre-polisher and 1 high lustre)

OFFERS VALID UNTIL 30 SEPTEMBER 2016

COLTENE
THE BRANDS YOU TRUST

BRILLIANT EverGlow™

UNIVERSAL SUBMICRON HYBRID COMPOSITE

- Exceptional polishability and long-lasting brilliance
- Smooth consistency provides ideal handling
- Good wettability on the tooth surface
- Ideal for layering



What is it you like so much about COLTENE's BRILLIANT EverGlow?
'The polish and gloss persistence of this material are groundbreaking'

Dr Monik Vasant BChD MFGDP (UK) MSc



'I was massively impressed with Coltene BRILLIANT Everglow's performance on so many levels. It does not stick to your instruments and this as well as it's obedience to packing movements of the operator ensure it will reliably adapt to the cavity form. Thereafter you have the aesthetics which are stunning - it does not demand a complex finishing protocol and you will achieve a smooth glassy, natural end result. It has excellent shade adaptation and I cannot recommend it enough to the armamentarium of any dentist.'

Dr Nalin Karunaratne BDS BSc (Hons) AKC MJDF RCS (Eng) MFDS RCPSG

BRILLIANT EverGlow Refills
Syringes

OFFER
3+1



BRILLIANT EverGlow Refills
Tips

OFFER
3+1



Pre-Op



1 week after

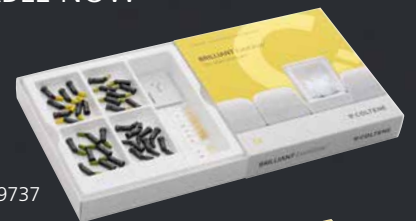


1 year after

Clinical case provided by Dr Monik Vasant BChD MFGDP (UK) MSc

BRILLIANT EverGlow TRIAL KITS
AVAILABLE NOW

Trial Kit
Tips
ART# 6001 9737



Trial Kit
Syringes
ART# 6001 9736



CONTACT US TODAY FOR A DEMONSTRATION AT YOUR PRACTICE

BRILLIANT Crios

REINFORCED COMPOSITE BLOCK
FOR PERMANENT
RESTORATION



- Tooth-like behaviour
- Reinforced composite
- Reliable Luting System

The new BRILLIANT Crios Reinforced Composite Blocks combine all advantages of an innovative submicron hybrid composite material for the CAD/CAM chairside manufacturing process - CEREC - to achieve a reliable, aesthetic and permanent restoration without an additional glazing process.

Shades and Sizes

Low Translucent



High Translucent



Size 14 Size 12



BRILLIANT Crios is available for CEREC/inLab

BRILLIANT CRIOS ADVANTAGES



Intro Kit CEREC 12

ART# 6002 0095
1 x A2 LT 12, A3 LT 12,
A3.5 LT 12, A2 HT 12,
A3 HT 12 5 x (0.1ml each)
ONE COAT 7 UNIVERSAL
Single Dose

Intro Kit CEREC 14

ART# 6002 0097
1 x A2 LT 14, A3 LT 14, A3.5 LT 14,
A2 HT 14, A3 HT 14 5 x (0.1ml each)
ONE COAT 7 UNIVERSAL Single Dose



OFFER

**Buy kit and get
1x FREE Syringe
of DUOCEM!**

Web: www.dmi.ie Email: info@dmi.ie

*Free products sent directly from Coltène on proof of purchase. Fax invoice to +44(0) 1444 870 640 or email to chris.goodby@coltene.com

ONE COAT 7 UNIVERSAL

The all-rounder

One bond for all application techniques

- Exceptional bonding values on enamel and dentine
- Excellent marginal seal
- Minimised postoperative sensitivity
- No waste
- New unique bottle
- **300** applications per bottle



With the system optimisation of ONE COAT 7.0, the reliable all-in-one bond ONE COAT 7 UNIVERSAL is now available for every indication.

The magic triangle

No matter whether Self-Etch, Total Etch or Selective Etch, ONE COAT 7 UNIVERSAL covers all needs.

Effortless bonding to materials such as gold, titanium, ceramics, zirconium oxide and composite entirely without additional primer or silane.



ONE COAT 7 UNIVERSAL Refill 5ml Bottles

ART# 60019539



ONE COAT 7 UNIVERSAL Intro Kit (bottle)

ART# 60019538

Contents: 1 x 5ml One Coat 7 Universal, 1 x 2.5ml Etchant Gel S, 1 x 20pcs Application tips, 1 x 50pcs Brushes black, 1 x mixing well, 1 x cover for mixing well



ONE COAT 7 UNIVERSAL Single Dose (50pcs)

ART# 60019540

Contents: 1 x 50pcs One coat 7 Universal Single Dose and 1 x 50pcs Brushes black



* Methacryloyl-oxydecyl-dihydrogenphosphate

Fill-Up!™

Deep. Fast. Perfect. Positive Restorative

- Guaranteed curing, even in cavities 10mm & deeper & no capping
- Minimal shrinkage due to dual cure
- Light cures in seconds
- Chemical cure in 3 mins
- Perfect marginal seal



Suitable for all posterior restorations



"This material has to be the quickest, simplest and most effective way to fill a deep cavity in seconds with one injectable tooth-coloured increment, no finishing, light curing optional and no residual monomer to worry about"

Professor Brian Millar
BDS (Dundee) FDSRCS(Eng) PhD (Lon) FHEA

Fill-Up! Intro Kit

ART# 6001 9342

20-25 Restorations per kit



Kit includes:
2 x 4.5g Fill-Up! Universal,
1 x 2.5g Etchant Gel S, 2 x 3ml Parabond Adhesive A+B, 6 x Mixing Tips Short SF, 8 x Mixing Tips Short F

Fill-Up! Refills

ART# 6001 9341



OFFER 3+1

AFFINIS®

Perfect impressions

- Surface affinity even in wet environments
- Optimised flow without pressure
- Ideal working time and short oral setting time
- First ever Autoclavable impressions
- Excellent readability

OFFER
3+1

ON ALL AFFINIS
PRODUCTS

(excluding 75ml, MicroSystem
and accessories)



AFFINIS® BLACK EDITION

The new black tray material AFFINIS heavy body BLACK EDITION reaches with gold or silver coloured AFFINIS PRECIOUS excellent readability of the impression. The unique colour combination displays details even more precisely and supports the qualitative assessment of the impression result.

**By popular demand...
now available in Heavy body System 360**



Affinis Heavy Body 360
BLACK EDITION Starter Kit



Affinis Heavy Body 360
BLACK EDITION Refills

OFFER
3+1

Web: www.dmi.ie

Email: info@dmi.ie

*Free products sent directly from Coltène on proof of purchase. Fax invoice to +44(0) 1444 870 640 or email to chris.goodby@coltene.com

HyFlex™ EDM

Electrical Discharge Machining

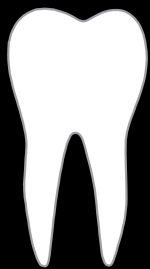
- Up to 700% higher fracture resistance
- Specially hardened surface
- Less filing required for treatment success

■ Reduced Number of Files

Depending on the clinical situation, use of HyFlex EDM files reduces the number of files to 2-3 pieces particularly in straight and larger canals.



25/~
Hyflex
OneFile



CORONAL

MIDDLE

APICAL

SEQUENCE
STEP BY STEP

**ORIFICE
OPENER**
(optional)
25 / 12

Glidepath File
10 / 05

**HyFlex
OneFile**
25 / ~

OFFER

Buy 2 packs
HyFlex OneFile
Refill (3pcs)
ART# 60019595

Get the matching
Guttapercha
Points 0.0~
FREE*
ART# 60019568

**FINISHING
FILES**
(optional)
40 / 04
50 / 03
60 / 02

Clinical Cases

"These files definitely know their way around curves. That's for sure. I love them!"

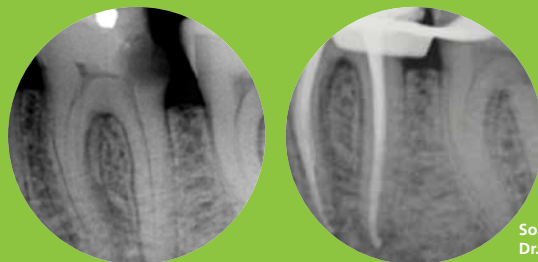
Dr. Antonis Chaniotis



Source:
Dr. Antonis Chaniotis

"I'm very happy to inform you that I have tried the HyFlex EDM to shaping some molars in vitro and in vivo (on patients) and I'm sure - it is incredible!"

Dr. Eugenio Pedullà



Source:
Dr. Eugenio Pedullà

Contact us for in-practice demonstration and get 1hr verifiable CPD

AVAILABLE NOW!

GuttaFlow™ bioseal

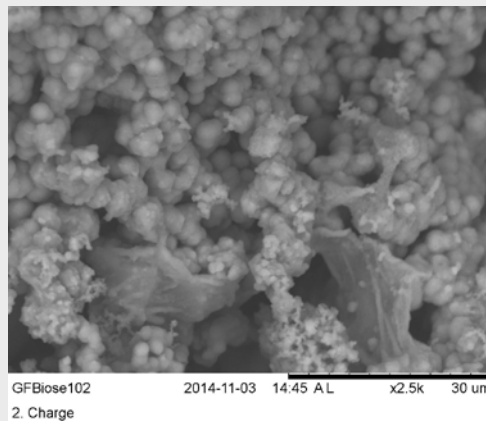
Not just for filling, also for healing



- Reliable cold filling system for root canals
- Gutta-percha and sealer in a single application
- NEW: Bioactivity for the healing process
- Bioactive obturation material

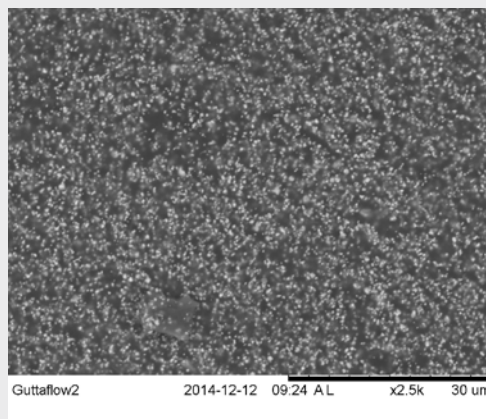
After curing, the bioseal forms hydroxylapatite crystals on the surface. The crystals significantly improve adhesion and also stimulate natural triggers, especially the regeneration of bone and dentine tissue.

This effect helps all dentists create long-lasting solutions for patients. Guttaflow bioseal combines free-flow gutta-percha with an appropriate sealer at room temperature.



Smaller particles

25000 x magnification of the surface of GuttaFlow2 under a scanning electron microscope



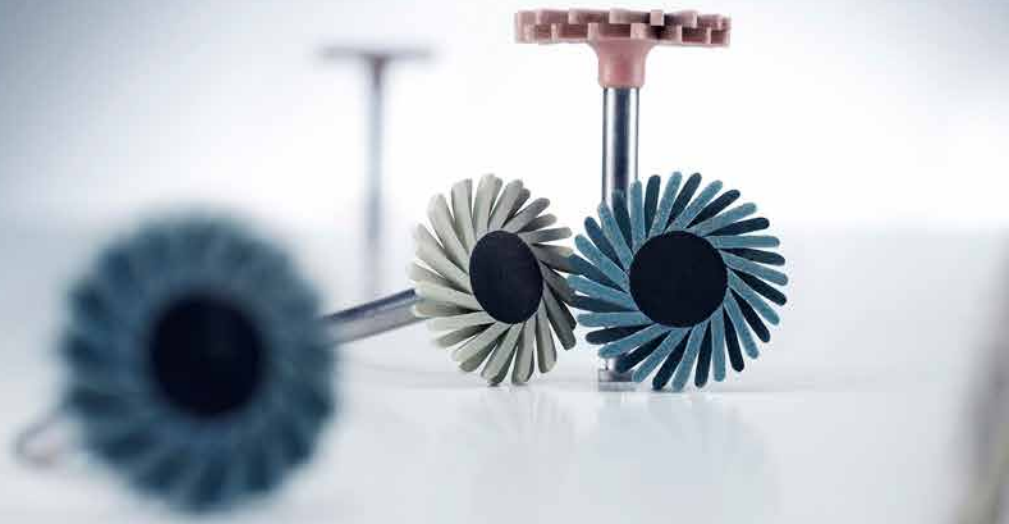
2500 x magnification of the hydroxylapatite crystals on the surface of GuttaFlow Bioseal under a scanning electron microscope

Contact us for in-practice demonstration and get 1hr verifiable CPD

Web: www.dmi.ie Email: info@dmi.ie

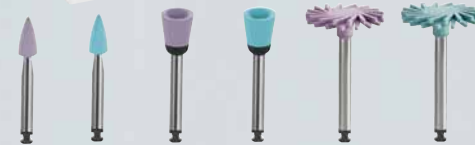
*Free products sent directly from Coltène on proof of purchase. Fax invoice to +44(0) 1444 870 640 or email to chris.goodby@coltene.com

NEW DIATECH SHAPEGUARD



Strong in Polishing
Gentle on Surfaces
A perfect compliment
to existing DIATECH
diamond polishing
systems

- Adapts to any surface
- Uniform pressure distribution due to flexible lamellas
Morphology of tooth is preserved
- Fast, easy and intuitive finishing & polishing
- Optimised polishing systems for composite and ceramics
- Outstanding high lustre polishing results



ShapeGuard Composite Polishing Kit ART# 60019916



ShapeGuard Ceramic Polishing Kit ART# 60019917



COURSE AND CONFERENCE DATES

July 1st
Composite Course
Matthew Thomas - Merthyr

July 8th
GDP ENDODONTIC Skills Development Day
Antonis Chaniotis - London

July 14th + 15th
Smile Design
Brian Millar - Grimsby

July 22nd, 23rd + 24th
LonDEC Masterclass (aesthetic + restorative)
LonDEC

July 23rd + 24th
Totally Composite Weekender
Monik Vasant - London

July 22nd
Composite Layering
Gareth Calvin - Glasgow Dental School

Aug 6th and 7th
Totally Composite
Monik Vasant - Milton Keynes

Aug 23rd, 24th + 25th
LonDEC Masterclass (Composite)
LonDEC

Sept 9th
Highland Dental Show
Inverness

Sept 12th + 13th
Smile Design
Brian Millar - Cornwall

Sept 16th
BAAD Study day
Reading

Sept 16th + 17th
IDENEX - COMPONEER Hands-on Workshop
Gary Heavey - Ireland

Sept 29th + 30th
Smile Design
Brian Millar - Nottingham

Oct 6th, 7th, 8th
BDIA SHOWCASE
London Excel

Oct 6th + 7th
SRRDG/ RD-UK annual conference 2016
Newcastle

Oct 8th + 9th
LonDEC Masterclass2 Day Direct Composite
LonDEC

Oct 13th + 14th
Smile Design
Brian Millar - Lincoln

Oct 14th
FGDP YORKSHIRE STUDY DAY 2016
Leeds

Oct 28th, 29th + 30th
LonDEC Masterclass (aesthetic + restorative)
LonDEC

Nov 4th
BDA - A day with Pascal Magne
Anterior and posterior bonded restorations
Dr Pascal Magne - London

Nov 11th + 12th
Pan Dental Society Conference + Exhibition
ICC Birmingham

Nov 18th
BAADS study day
Reading

Booking and information

Contact: Pippa Carolan
Pippa.Carolan@coltene.com
or T: 01444 235486 Ext.202