

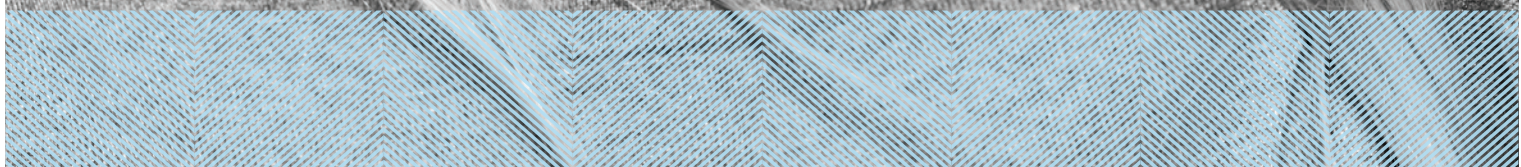


CREATED BY SDI

POLA

ADVANCED TOOTH
WHITENING SYSTEM

YOUR SMILE
CATALOGUE





TALK TO
YOUR PATIENT
ABOUT A
WHITENING
PROGRAM
THAT'S RIGHT
FOR THEM

IN OFFICE TREATMENTS

Pola Rapid	38% hydrogen peroxide	3 x 8 minute application
Pola Office+	37.5% hydrogen peroxide	3 x 8 minute application
Pola Office	35% hydrogen peroxide	3 x 8 minute application



AT HOME TREATMENTS

Pola Day

6% hydrogen peroxide	1 or 2 x 30 minute applications or 1 x 45 minute application per day
7.5% hydrogen peroxide	1 or 2 x 30 minute applications or 1 x 45 minute application per day
9.5% hydrogen peroxide	2 x 15 minute applications or 1 x 30 minute application per day



Pola Night

Note: 1% of hydrogen peroxide equates to 3% of carbamide peroxide

10% carbamide peroxide	1 x 2 hours to overnight
16% carbamide peroxide	90 minutes per day to overnight
18% carbamide peroxide	90 minutes per day to overnight
22% carbamide peroxide	1 x 45 minutes per day



Pola for Aligners

10% carbamide peroxide	1 x 2 hours to overnight
------------------------	--------------------------



Pola Day CP

35% carbamide peroxide	15 minutes wear time at home or 30 minutes for jump start in dental office
------------------------	---



Pola Light

6% hydrogen peroxide	2 x 10 or 2 x 15 minute treatments a day
9.5% hydrogen peroxide	2 x 10 or 2 x 15 minute treatments a day



ON THE GO

Pola Luminare

6% hydrogen peroxide	2 x 30 minute applications per day
----------------------	------------------------------------



DESENSITISER

Soothe

Potassium nitrate and fluoride releasing gel to relieve tooth sensitivity.



POLA OFFICE

POLA OFFICE+

IN OFFICE TREATMENTS

Pola Office / Pola Office+

Pola Office+, with its 37.5% hydrogen peroxide formulation is designed to whiten teeth in less than 30 minutes.

Indications: Whitening of discolored vital and non-vital teeth.

Minimal chair time and built in desensitiser

With its neutral pH to protect your patient's teeth and gum, the unique formulation releases the active ingredients immediately to initiate the whitening treatment.

Pola Office+ is designed to protect sensitive dental nerves and nerve endings with Pola Desensitising Technology (PDT) which ensures that the whitening only acts on teeth, minimizing irritation, burning, pain or long-term gum damage.



POLA RAPID STEP BY STEP GUIDE

1. Determine and record pre-operative shade using the Vita* shade guide.
2. Clean teeth with ONLY a flour-based pumice.
3. Place cheek retractors and then cover exposed lip surface with petroleum gel.
4. Dry teeth and apply Gingival Barrier to both arches, slightly overlapping enamel and interproximal spaces.
5. Light cure in a fanning motion for 10-20 seconds until Gingival Barrier is cured.
6. **Firmly** attach a mixing nozzle to the Pola Rapid syringe away from patient, and insert the plunger. Dispense a small amount of gel onto a mixing pad until a uniform blue gel is extruded.
7. Using the nozzle as a guide, directly apply a thin layer of gel to all teeth undergoing treatment. A thin layer will help prevent the gel from running.
8. Leave gel on for 8 minutes (Optional: A curing light may be used at this stage, Radium Xpert or Radium Plus (SDI Limited)).
9. Suction off using a surgical aspirator tip. Note: It is normal for a residue layer of gel to remain on the surface of the teeth.
10. Complete steps 7-9 three times (optional 4 times).
11. After the last application, suction all the gel off, then wash and apply suction.
12. Remove Gingival Barrier by lifting it from one end.
13. Record the final shade.



Image source: Dr Miles Cone, USA.

POLA RAPID

SUPER.
FAST.
WHITENING.



Pola Rapid is the new in office whitening treatment that safely whitens teeth in a 24 minute application time.

A unique 38% hydrogen peroxide formulation that releases active ingredients immediately.

Pola Rapid initiates a powerful whitening treatment designed to whiten teeth in 24 minutes. No pre-desensitiser step is required.

Enhanced blue gel for faster application

Pola Rapid uses an advanced blue gel for ease of visibility and application. The easy to apply, non-stick gel enables faster application and removal.

Simple delivery and precise application

No mixing is required. The dual barrel syringe system mixes as the gel is applied directly to the tooth. The supplied brush tip helps deliver a smoother and more precise application.

Built in desensitisers

Pola Rapid has unique built-in desensitising properties that inhibit post-operative sensitivity. Potassium nitrate, the key pain reducing ingredient, prevents sensitivity to provide a calming effect. The high water content of Pola Rapid ensures maximum comfort during and after treatment. The shorter treatment time results in less patient discomfort and lower sensitivity.

Fluoride releasing to strengthen teeth

Pola Rapid contains fluoride, helping to strengthen teeth and protect against sensitivity.

Can be used with or without a bleaching light

Pola Rapid can be used with or without a bleaching light, as it does not require heat to activate.



CLINICAL CASE STUDY



Dr Sam Koh
BDS Sc Melb (Hons)
Melbourne, Australia

Pola Rapid 38%

"I find Pola Rapid a beautiful, easy-to-use product. It is simple to apply and remove with its non-stick and enhanced blue gel formula. A great product to use by clinicians for in-chair whitening with minimal chair time and patient sensitivity, but reliable and immediate results."



POLA
DAY

POLA
NIGHT

POLA
DAY CP

AT HOME TREATMENTS

Fluoride releasing

Pola Day and Pola Night both contain fluoride, which helps strengthen the tooth to protect it against sensitivity.

Safe and convenient

Pola Day and Pola Night's unique high water content formulation has a neutral pH to protect gums and teeth during treatment.

Effective whitening

The desired whitening effect can be achieved in as little as 15 minutes or can be conveniently applied overnight while you sleep. Use the pola Selector to choose the product that is most suitable for your patient (available at www.polawhite.com.au).

Pola Desensitising Technology (PDT)

Pola Day and Pola Night contain PDT to assist with the prevention of post treatment sensitivity.

What's the difference between Pola Day and Pola Night?

Pola Day consists of a range of hydrogen peroxide based take home gels specifically designed for achieving whitening results for patients with limited time in their schedule.

Pola Night is a range of carbamide peroxide based take home gels that deliver optimum whitening results to patients who have more sensitive teeth.

Both ranges are available in a variety of different strengths with the lower concentrations geared towards more sensitive teeth.

Pola Day CP

Pola Day CP is the super-fast take home whitening gel which only to be worn just 15 minutes each day. It is designed for those people who need to jump start their tooth whitening in a short space of time.



ON THE GO TREATMENTS

POLA
LUMINATE

Recharge the brightness with Pola Luminare! With 6% hydrogen peroxide, pola luminare is our highest strength brush on tooth whitener. It is designed to easily fit into your patient's pocket or bag to be used on the go! This is a great touch up tool to maintain an already white smile.



POLA

FOR ALIGNERS



STRAIGHTEN AND BRIGHTEN TOGETHER

Introducing Pola whitening gel for aligners, perfectly formulated for use with orthodontic aligner trays. Pola For Aligners can easily be used as a take home kit, ensuring a great patient experience by providing whiter, brighter smiles with no additional wear time.

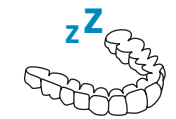
Pola For Aligners combines the same benefits of the award-winning Pola whitening formula

- ✓ The greatest patient comfort in a whitening kit
- ✓ Contains potassium nitrate and fluoride to reduce sensitivity for long term use
- ✓ High viscosity gel ensures it can be easily and securely placed into the aligner tray, staying in place

Available in a convenient 4 syringe kit - for take home, day or overnight wear

- ✓ The Pola For Aligners system is available in Pola Night 10% carbamide peroxide gel that has been carefully selected as the ideal whitening agent to suit any aligner system. It enables patients to customise use between meals for just a couple of hours a day, to the convenience of overnight wear
- ✓ Clinical research has identified 10% carbamide peroxide as the Gold standard in teeth whitening, providing optimal whitening results whilst maintaining maximum patient safety and comfort*

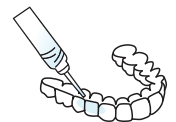
*Source: Efficacy of Pola Night on tooth whitening, 24 months post treatment on Japanese 2006 - Tsubura Shuichi



SAFE FOR
OVERNIGHT WEAR



FLUORIDE
RELEASING



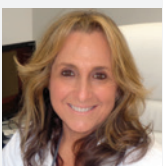
EASY TO USE



PROFESSIONALLY USED
AND RECOMMENDED



CLINICAL CASE STUDY



Dr Linda Greenwall
BDS MGDS RCS MSc MRD
RCS FFGDP FICD BEM
Prosthodontist and Specialist
in Restorative Dentistry
UK

Pola Night 10% CP for Aligners

Pola Night 10% CP for Aligners has been used for 6 weeks with clear orthodontic aligners.





WHITER
BRIGHTER
YOU

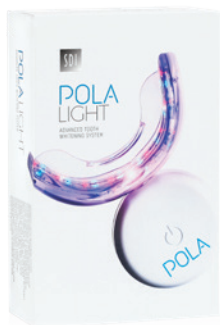
POLALIGHT

NEW ADVANCED TAKE HOME TOOTH WHITENING SYSTEM WITH LED LIGHT TECHNOLOGY

ENJOY A BRIGHTER, MORE CONFIDENT SMILE IN 5 DAYS.

Pola Light is an advanced tooth whitening system that combines Pola's award-winning whitening formula, with an LED mouthpiece, for a faster whitening treatment.

- The Pola Light system combines with Pola Day.
- Fast acting, delivering whiter teeth in as little as 5 days.
- Formulated to safely remove long term stains.
- Fully rechargeable for future tooth whitening treatments.
- Remineralisation to strengthen the teeth.
- Extra hydration to minimize sensitivity.



FROM JUST
20 MINUTES
A DAY

2 x 10 or 2 x 15 minute
treatments a day.



EASY TO USE

Portable, rechargeable and easy to wear
with no cord attached to mouthpiece.
Pola LED mouthpiece is a dual arch and a
universal size.



WHITER
TEETH IN
FIVE DAYS

5 day treatment time.
No chair time or custom trays
required, saving time for both
patient and dentist.



PROFESSIONALLY
USED AND
RECOMMENDED

Pola is a professional tooth whitening system
that is trusted and recommended by dentists to
achieve a safer, quicker and whiter smile.
The high viscosity, neutral pH tooth whitening
gels ensure the greatest patient comfort in a
take home kit.
The unique blend of soothers, conditioners and
high water content assist in reducing sensitivity.

CLINICAL CASE STUDIES



Prof. Leandro Martins

POLA NIGHT

Pola Night 10%

One of the biggest problems of dental whitening is tooth sensitivity. Therefore, finding products that bring greater safety is the key. With low concentration carbamide peroxide, Pola Night bleach has high water content, neutral pH, desensitisers and high viscosity. These characteristics responds to the patient's demand for an effective result with protection against sensitivity and gingival irritation. Therefore, the choice for Pola Night 10% is due to its characteristics of a convenient, safe and effective product.

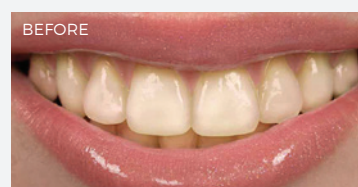


Dr. David Carralero Plaza

POLA DAY

Pola Day 6%

Pola Day is a product that I have been using for more than 10 years, with very good results. For take home treatments, I prefer to use the maximum concentration of hydrogen peroxide, because we get faster and more comfortable results for our patients, since the product can be in the mouth for less time.

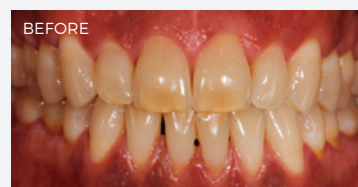


Dr. Marta Peydro Herrero
Dr. José Amengual Lorenzo

POLA OFFICE+
POLA NIGHT

Pola Office+ 37.5% followed by 5 weeks Pola Night 16% CP

The whitening products that make up the Pola tooth whitening system, allow me to solve most of the dental discolorations that we can face in daily clinical practice in a simple way, but, above all, safe for the patient. Whether it is an in-office treatment, take home or combined, we achieve a white smile, satisfying the expectations of our patients.



Dr. Michael Chan

POLA OFFICE+

Pola Office+ 37.5%

The Pola family of whitening products offers great flexibility to patients. The chairside Pola Office products have a nice consistency that allows for greater clinical control. I have found the system reliable to use and minimal hypersensitivity for patients



FAQ

What causes tooth discolouration?

Everyone's teeth are unique, therefore they discolour and stain in different ways. The discolouration or staining of a person's tooth is typically caused by strong coloured foods and liquids such as coffee, curry or from smoking cigarettes.

How does tooth whitening work?

When a whitening product is applied to the tooth, it breaks down into water and oxygen ions. The oxygen ions enter the enamel and attack the long stain molecules to effectively break them down to be short and colourless. These short and colourless molecules are then naturally removed from the tooth by saliva. The intensity of whitening is related to the number of ions available and the length of time they are on the tooth.



How long does it take to whiten a patient's teeth?

With In Clinic whitening, results may be obtained in just 30 minutes treatment time. Using a take home whitening system may take approximately 5-14 days.

How long will the whitening treatment last?

Teeth whitening is an irreversible dental procedure and the time frame in which the treatment will last is dependent on the individual person and their oral habits. Teeth whitening can be repeated from 6-12 months for both in office and take home procedures. Without a touch up, your patients teeth will start to re-stain by the same thing that caused them to discolour in the first place.

What if the patient has restorations or veneers, will these change colour?

Whitening will remove any existing stains on the restorations but will not affect the original shade.

Are there any side effects?

For those who follow the Instructions for Use that come with the pola products, the majority will have no side effects. However, some will experience temporary sensitivity (dull or sharp, sensitive to hot or cold). This will subside after several hours of stopping the treatment and won't leave any residual problems. The wear times can be shortened or made less frequent or teeth can be treated with a desensitiser, Soothe. The patient should abstain from carbonated drinks, citrus fruits and beverages to avoid sensitivity.

Is teeth whitening safe during pregnancy?

It is not recommended to use teeth whitening products during pregnancy.



POLA IN OFFICE

Pola Rapid 1 patient kit

7700517 Pola Rapid 1 Pat Kt
7700516 Pola Rapid 1 Pat Op Gate Kt
1 x 2.8 mL syringe of Pola Rapid
1 x 1g Gingival Barrier syringe
Accessories



Pola Office+ 1 Patient Kit

7700427 (with 1 x Optragate®)
7700426 (no Optragate®)
1 X 2.8 mL syringe of Pola Office+
1 X 1g Gingival Barrier syringe
Accessories



Pola Office 1 Patient Kit

7700031
2 X 0.3g Pola Office Powder Pots
2 X 2mL Pola Office Syringes
1 X 1g Gingival Barrier Syringe
Accessories



Pola Rapid 3 patient kit

7700519 Pola Rapid 3 Pat Kt
7700518 Pola Rapid 3 Pat Op Gate Kt
3 x 2.8 mL Syringes of Pola Rapid
3 x 1g Gingival Barrier syringe
Accessories



Pola Office+ 3 Patient Kit

7700412 (with 3 x Optragate®)
7700411 (no Optragate®)
3 X 2.8 mL syringes of Pola Office+
3 X 1g Gingival Barrier syringes
Accessories



Pola Office 3 Patient Kit

7700011
6 X 0.3g Pola Office Powder Pots
6 X 2mL Pola Office Syringes
3 X 1g Gingival Barrier Syringes
Accessories



Gingival Barrier 2 Syringe Refill

7750006
2 X 1g Gingival Barrier Syringes
Accessories



POLA AT HOME

Pola Day and Pola Night 10 x 1.3g Syringe Kits

7710020 (6% HP)
7700151 (7.5% HP)
7700154 (9.5% HP)
7700157 (10% CP)
7700160 (16% CP)
7710023 (18% CP)
7700163 (22% CP)
7700328 (35% CP)



Pola Day and Pola Night 4 x 1.3g Mini Kits

7710021 (6% HP)
7700150 (7.5% HP)
7700153 (9.5% HP)
7700156 (10% CP)
7700159 (16% CP)
7710022 (18% CP)
7700162 (22% CP)
7700326 (35% CP)



Pola Day and Pola Night 50 x 3g Dispenser Kit

7700075 (6% HP)
7700081 (7.5% HP)
7700082 (9.5% HP)
7700076 (10% CP)
7700077 (16% CP)
7700078 (18% CP)
7700083 (22% CP)
7700084 (35% CP)



Soothe

8150002
4 X 1.2mL Soothe Syringes



8150033
50 X 1.2mL Soothe Syringes

Pola Light

7700982 (6% HP)
7700988 (9.5% HP)



Pola Night 10% CP for Aligners 4 x 3g Syringe Kit

7700982 (10% CP)



Please note: each pack includes accessories.

CP: Carbamide Peroxide
HP: Hydrogen Peroxide

Tray Cases: 5 Pack

7750008
5 Tray Cases

Tray Material: 20 Pieces

7750005
20 Piece Refill

Spacer Resin 2 Syringe Refill

7700012
2 X 1g Spacer Resin Syringes

Cosmetic Pola Pouches: 10 Pack

7700999
10 Pouches

POLA ON THE GO

Pola Luminare

7700092
1 X 5.5mL Pola Luminare



Optragate® is not a registered trademark of SDI



CREATE
BEAUTIFUL
SMILES

COMPLIMENTARY MARKETING MATERIAL

MARKETING MATERIAL TO ASSIST IN PROMOTING WHITENING TO PATIENTS.



POSTER POLA DAY
Reorder M100274



POSTER POLA NIGHT
Reorder M100275



POSTER POLA OFFICE+
Reorder M100276



POSTER POLA RAPID
Reorder M100568



POSTER POLA
Reorder M100572



POSTER POLA LIGHT
Reorder M100504



POLA LIGHT STAND
Reorder M100505



POLA PATIENT HANDOUT STAND
Reorder M100290



POLA PATIENT HANDOUTS
Reorder M100283



POLA BEFORE & AFTER STAND
Reorder M100288



POLA LIGHT PATIENT
HANDOUT
Reorder M100506



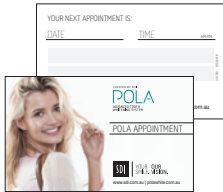
POLA LIGHT DENTIST
HANDOUT
Reorder M100507



POLA CEILING TILE
Reorder M100293



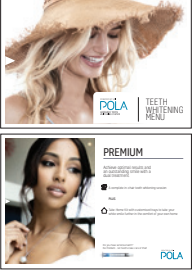
POLA STATEMENT STUFFER
Reorder M100291



POLA APPOINTMENT CARDS
Reorder M100287



POLA THANK YOU
CARD
Reorder M100295



POLA MENU
BOOKLET A5
Reorder M100292



POLA WINDOW
STICKER
Reorder M100289



POLA CARRY BAG
Reorder M100143



POLA WAITING ROOM
USB VIDEO
Reorder M100245



CUSTOMISABLE MARKETING
MATERIAL
More customisable marketing
material is available via download.
Visit www.sdi.com.au

SDI LIMITED IS PRIMARILY INVOLVED IN THE RESEARCH AND DEVELOPMENT, MANUFACTURING AND MARKETING OF SPECIALIST DENTAL MATERIALS. SDI'S PRODUCTS ARE A COMBINATION OF INNOVATION AND EXCELLENCE TO PROVIDE THE IDEAL RESTORATIVE MATERIALS FOR THE DENTAL PROFESSION.



MADE IN AUSTRALIA
by SDI Limited
3-15 Brunsdon Street,
Bayswater, Victoria 3153 Australia
www.sdi.com.au

AUSTRALIA 1 800 337 003
AUSTRIA 00800 022 55 734
BRAZIL 0800 770 1735
FRANCE 00800 022 55 734
GERMANY 0800 100 5759
ITALY 00800 022 55 734
NEW ZEALAND 0800 808 855
SPAIN 00800 022 55 734
UNITED KINGDOM 00800 022 55 734
USA & CANADA 1 800 228 5166



INSTAGRAM
[@pola_smile](https://www.instagram.com/pola_smile)



FACEBOOK
[polasmiletoothwhitening](https://www.facebook.com/polasmiletoothwhitening)

FOR MORE INFORMATION VISIT
polawhite.com.au

