



RIVA LIGHT CURE

LIGHT CURED RESIN REINFORCED
GLASS IONOMER RESTORATIVE MATERIAL

NOW WITH
EASY
ACTIVATION
CAPSULE

THE MULTI
AWARDED
EASY HANDLING
GLASS IONOMER



THE IONGLASS LONG TERM BREAKTHROUGH



Drawing on 50 years of dental research experience, SDI's *ionglass™* filler was developed specially for Riva and is manufactured in Australia by our glass experts.

The *ionglass™* technology mimics the natural tooth structure, guaranteeing restorations will withstand long term mastication forces and patients will be satisfied with the treatment.

BIOACTIVE GLASS

Riva Light Cure contains *ionglass™* filler, made of a unique blend of different sizes of ultrafine highly reactive glass particles. This bioactive proprietary hybrid glass enables long term restorations, being outstanding in handling, strength and aesthetics.

The *ionglass™* filler contains fluoride and strontium ions which synergistically enhance tooth bioremineralisation.

[Source: Thuy et al. Arch Oral Biol. 2008 Nov; 53(11):1017-22]

Superior biocompatibility ensures healthier teeth, the restoration will last longer and the patient will be more satisfied.

RIVA LIGHT CURE MIMICS TEETH

Riva Light Cure *ionglass™* biomimetic technology mimics dentine's hydrophilic characteristic. It also mimics translucency and opacity of dentine and enamel, for a beautiful natural-looking restoration.

Riva Light Cure replaces dentine and bonds chemically to the tooth. No etching or adhesive is required, dramatically reducing the risk of sensitivity. A patient with a nice smile and no sensitivity has better quality of life.

HIGH FLEXURAL STRENGTH

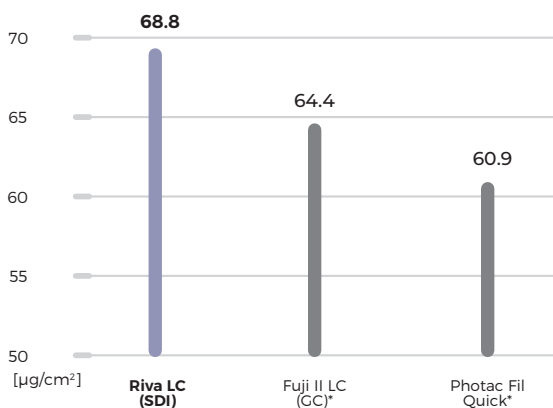
Riva Light Cure with *ionglass™* biomimetic technology ensures very high flexural strength, for long term restorations that will withstand mastication forces without cracking. The high flexural strength also makes Riva Light Cure the ideal material for minimally invasive treatments, cervical erosions/abfraction lesions, class V restorations and as a base or liner.

HIGH FLUORIDE RELEASE

The extra strong matrix provides great fluoride release. This increases the chances that Riva Light Cure restorations will be free of caries, while having very low wear.

Research shows that Riva Light Cure has the highest cumulative fluoride release at 6 weeks[†]. With Riva Light Cure, patients receive long term restorations every time, increasing their satisfaction with the treatment provided by the dentist.

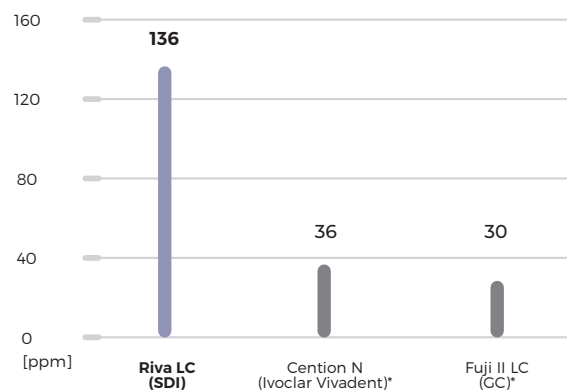
FLEXURAL STRENGTH AT 1 WEEK



Source: Al-Naimi OT, Lopes MB, McCabe JF, Prentice LH. Flexural Strength of Resin-Modified Glass-Ionomer cements [RMGICs]. Brisbane (Australia), June 2006.

*Not a registered trademark of SDI.

FLUORIDE RELEASE AT 6 WEEKS



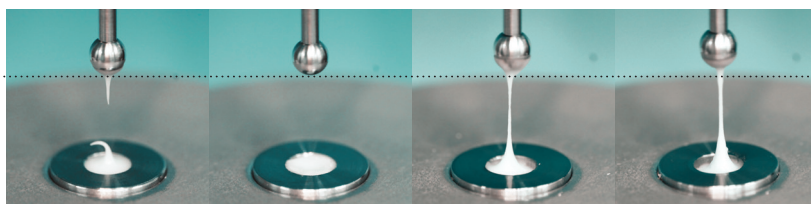
[†]Source: PANPISUT, P. and TONELUCK, A. Monomer conversion, dimensional stability, biaxial flexural strength, and fluoride release of resin-based restorative material containing alkaline fillers. DENTAL MATERIALS JOURNAL, 2020.

*Not a registered trademark of SDI.

EXCEPTIONAL HANDLING

Riva Light Cure can be effortlessly placed and sculptured without sticking to your instruments. This outstanding restorative does not pluck, saving you time and maintaining placement integrity, especially when restoring upper teeth.

Riva Light Cure offers fantastic handling, perfect for quick placements in patients who require quick restorations, such as children, people with special needs or patients with back or neck problems.



Riva LC (SDI)

Riva LC HV (SDI)

Fuji II (GC)*

Photac Fill (3M)*

Source: Internal test data Nov 2020

*Not a registered trademark of SDI.

VISCOSITY

Riva Light Cure is available in two viscosity options to suit your placement preferences.



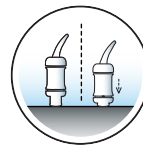
REGULAR



HV HIGH VISCOSITY

EASY ACTIVATION

The new Easy Activation capsules are now 70% easier to activate. This saves you time and effort when preparing a restoration.

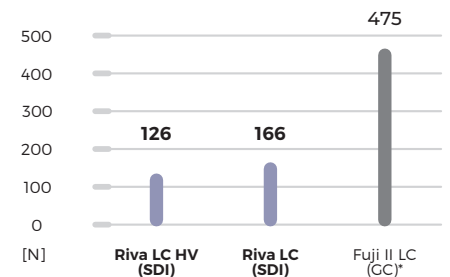


EASIER EXTRUSION

Riva Light Cure is 70% easier to extrude.[†] This minimises hand tremors and muscle stress, giving you more stability and control when placing restorations.



AVERAGE EXTRUSION FORCE



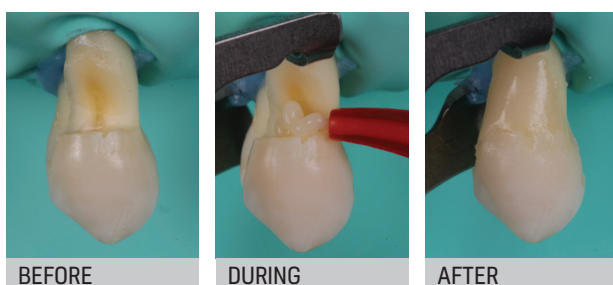
[†]Source: Internal test data Nov 2020

*Not a registered trademark of SDI.

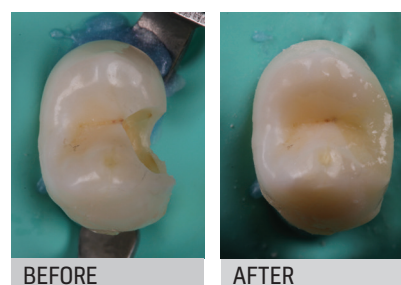
» The Discipline of Paediatric Dentistry at the Faculty of Dentistry of USP has been transformed for the better after it introduced Riva products to its undergraduate clinic. The capsule tips and easy placement ability ensure that restorations are performed faster and with fewer errors. «

Dr Daniela P. Raggio,

Associate Professor - University of Sao Paulo, Editor in Chief International Journal of Paediatric Dentistry (UK)



Photos courtesy of Dr Marcelo Alves & Dr Alvaro Junqueira - Brazil

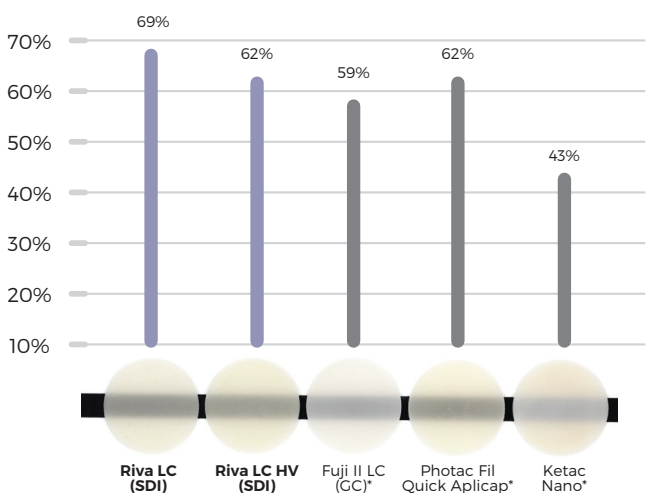


Photos courtesy of Dr Marcelo Alves & Dr Alvaro Junqueira - Brazil

BEST IN CLASS AESTHETICS

OPTIMAL TRANSLUCENCY

Riva Light Cure is formulated to give you the best aesthetic result.[†] It provides high translucency and ideal optical properties. This chameleon effect effortlessly blends with surrounding tooth structure and dentine.



[†]Source: Published and SDI Test Data.

*Not a registered trademark of SDI.



BEFORE



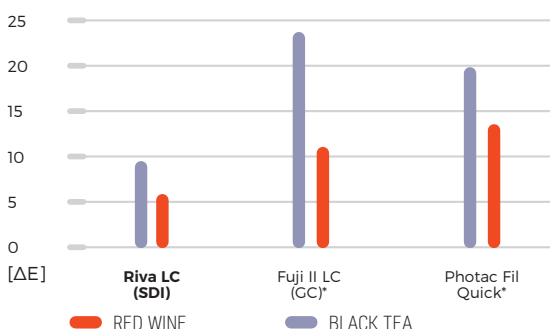
AFTER

Photos courtesy of Dr Geoff Knight - Australia

EXCEPTIONAL COLOUR STABILITY

Riva Light Cure has excellent resistance to common stains such as black tea and red wine. Riva Light Cure outperforms other solutions by 50%[†], ensuring your patients have brighter and natural, whiter smiles for longer.

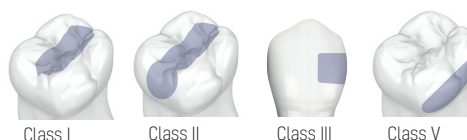
COLOUR CHANGE AT 1 WEEK



[†]Source: Published and SDI Test Data.

*Not a registered trademark of SDI.

A RESTORATIVE WITH MORE INDICATIONS



- ✓ Class I
- ✓ Class II (see technique guide on SDI website)
- ✓ Class III
- ✓ Class V
- ✓ Cervical erosion
- ✓ Abfraction lesions
- ✓ Root surface restorations
- ✓ Core build up
- ✓ Deciduous teeth restorations
- ✓ Geriatric restorations
- ✓ Temporary fillings
- ✓ ART (Atraumatic Restorative Treatment)
- ✓ Dentine replacement
- ✓ Sandwich technique restorations
- ✓ Molar Incisal hypomineralisation (MIH) [intermediate approach]
- ✓ Liner (regular viscosity only)
- ✓ Pit and fissure sealant (regular viscosity only)

» This product works so much better than other RMGIs I have used; it is so easy to place, flows well, sculpts and finishes beautifully. «

Evaluator comment - The Dental Advisor, USA 2020

LONG TERM RESTORATIVE

Riva Light Cure is the glass ionomer restorative that has restored the smiles of over 35 million people across 100 countries.

Using award winning patented *ionglass™* technology, Riva Light Cure has earned its reputation through superior aesthetics, strength and handling. Riva Light Cure is the ideal long term glass ionomer solution.



INNOVATIVE LIGHT SAFE TIP

The Riva Light Cure capsule has a transparent orange nozzle. The orange tint protects the paste from prematurely curing under operating light in between placements. This innovation ensures you receive maximum placement control, while reducing waste.

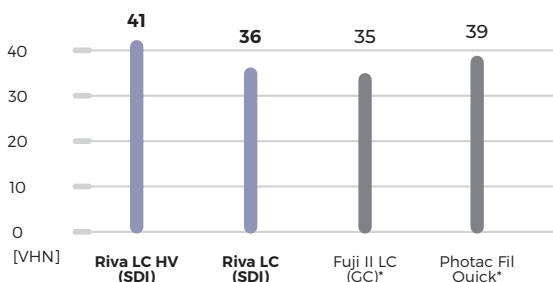
LONG TERM ACID RESISTANCE

The *ionglass™* technology stimulates the biomineralisation of dentine by over saturating the minerals in its organic matrix. The result is the formation of fluorapatite crystals, which are more resistant to acid attacks than the natural tooth, benefiting patients during bacterial and acidic challenges.†

The surface hardness of resin-reinforced glass ionomer cements means good long term wear resistance. The greater the surface hardness, the greater the resistance to permanent surface indentation.

†Thomas Faidt et al. 2018. Effect of Fluoride Treatment on the Acid Resistance of Hydroxyapatite. Langmuir 34(50).

SURFACE HARDNESS AT 24 HOURS



Source: Internal test data Nov 2020

*Not a registered trademark of SDI.

» Dr Gordon Christensen* listed RIVA LC HV as one of his personal preferences for resin-modified ionomers. «

Published first in DENTAL ECONOMICS - February 2021 - Ask Dr. Christensen - The best pediatric dental restorations

***GORDON J. CHRISTENSEN, DDS, PhD, MSD** is founder and CEO of Practical Clinical Courses and co-founder and CEO of Clinicians Report.

BPA FREE

Riva Light Cure is BPA-free, making it a safer option for you and your patients.



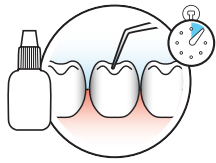
11 SHADES

Ten classic shades and a Bleach shade, ideal for whitened teeth or deciduous teeth.

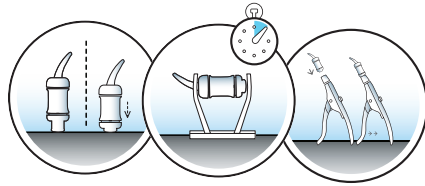
» Being a light cured material, I had plenty of time to manipulate and contour. «

Evaluator comment - The Dental Advisor, USA 2020

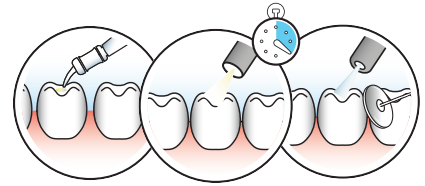
INSTRUCTIONS[^]



1 Prepare cavity and isolate the tooth. Apply Riva Conditioner for 10 seconds, wash and remove excess water.



2 Activate the capsule and mix it in a triturator for 10 seconds, before placing it into the applicator.



3 Apply 2mm increments, light curing for 20 seconds each. Polish under water spray.

[^] For powder and liquid instructions, please refer to Instructions for Use



CAPSULES

Riva Light Cure Capsules

50 Riva Light Cure capsules

A1	8700001
A2	8700002
A3	8700003
A3.5	8700004
A4	8700005
B2	8700007
B3	8700008
B4	8700010
C2	8700012
C4	8700014
Bleach	8700016

Riva Light Cure Capsule Assorted Kit

10 each of A1, A2, A3, A3.5 and B2 capsules 8710000

Riva Light Cure HV Capsules

50 Riva Light Cure HV capsules

A1	8730001
A2	8730002
A3	8730003
A3.5	8730004
B1	8730006

POWDER AND LIQUID

Riva Light Cure Powder / Liquid Kits

8g (7.2mL) Riva Light Cure Liquid bottle
15g Riva Light Cure Powder bottle
Accessories

A1	8700501
A2	8700502
A3	8700503
A3.5	8700504

Riva Light Cure Powder / Liquid Kits

3g (2.7mL) Riva Light Cure Liquid bottle
5g Riva Light Cure Powder bottle
accessories

A2	8700517
A3	8700518



POWDER

Riva Light Cure Powder Refills

15g Riva Light Cure Powder refill

A2	8700102
A3	8700103



LIQUID

Riva Light Cure Liquid Refill

8g (7.2mL) Riva Light Cure Liquid bottle 8700900



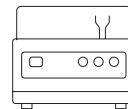
ACCESSORIES

Riva Conditioner 10mL bottle refill 8620001



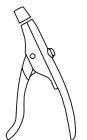
EQUIPMENT

Ultramat 2	High speed multi-use triturator
Ultramat S	High speed multi-use triturator
Radii Xpert	LED curing light 5600300



APPLICATORS

Riva Applicator	5545009
Riva Applicator 2	5545013



YOUR SMILE. OUR VISION.



04/2021

M870001 L



+D036M87000117

MADE IN AUSTRALIA
by SDI Limited
Bayswater, Victoria 3153
Australia
www.sdi.com.au

AUSTRALIA 1800 337 003
AUSTRIA 00800 0225 5734
BRAZIL 0800 770 1735
FRANCE 00800 0225 5734
GERMANY 0800 100 5759

ITALY 00800 0225 5734
NEW ZEALAND +64 21 400 323
SPAIN 00800 0225 5734
UNITED KINGDOM 00800 0225 5734
USA & CANADA 1 800 228 5166